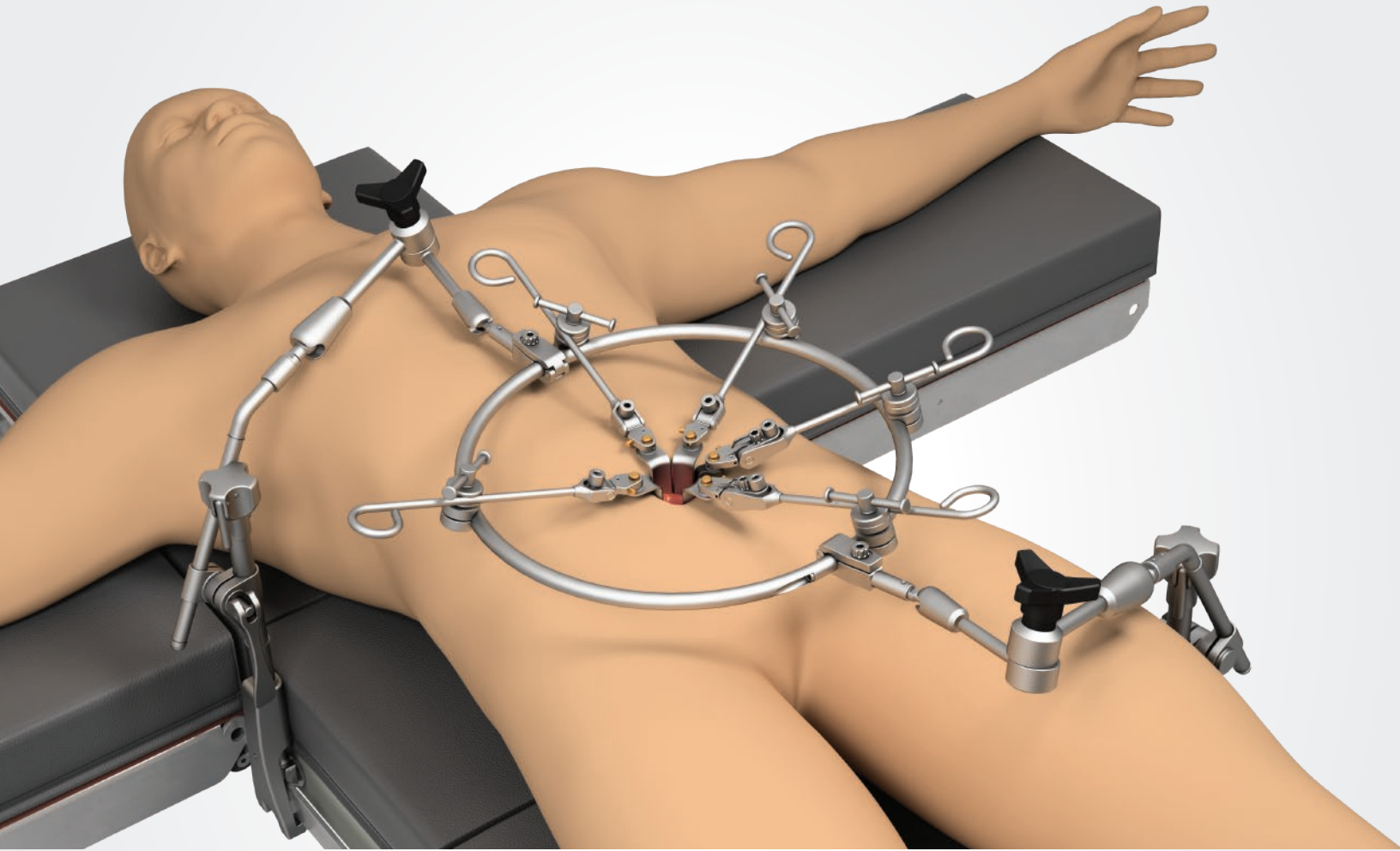


"Thompson's Anterior Lumbar Ring System provides a simple, safe, and intuitive platform to achieve consistent midline spine exposure using minimal incision size while affording maximal exposure of the anterior spine."

- Jonathan E. Schoeff, MD, FACS



Uncompromised Exposure™ for **ALIF Access** with the **Thompson AL Ring Retractor System**

Anterior Lumbar Spine Access

The versatile Thompson Anterior Lumbar Ring System allows for quick, secure placement of the handles around the surgical site while providing the surgeon with an unobstructed view of the working area.

Surgeons familiar with a ring style frame will find the AL Ring System incredibly intuitive, functioning similarly to other rings but with marked improvements.

Sterile Table Mount

Mounts and adjusts within the sterile field. Single piece reduces instrument counts.



Circle Joints

Low profile joints provide strong, secure attachment for retractors.



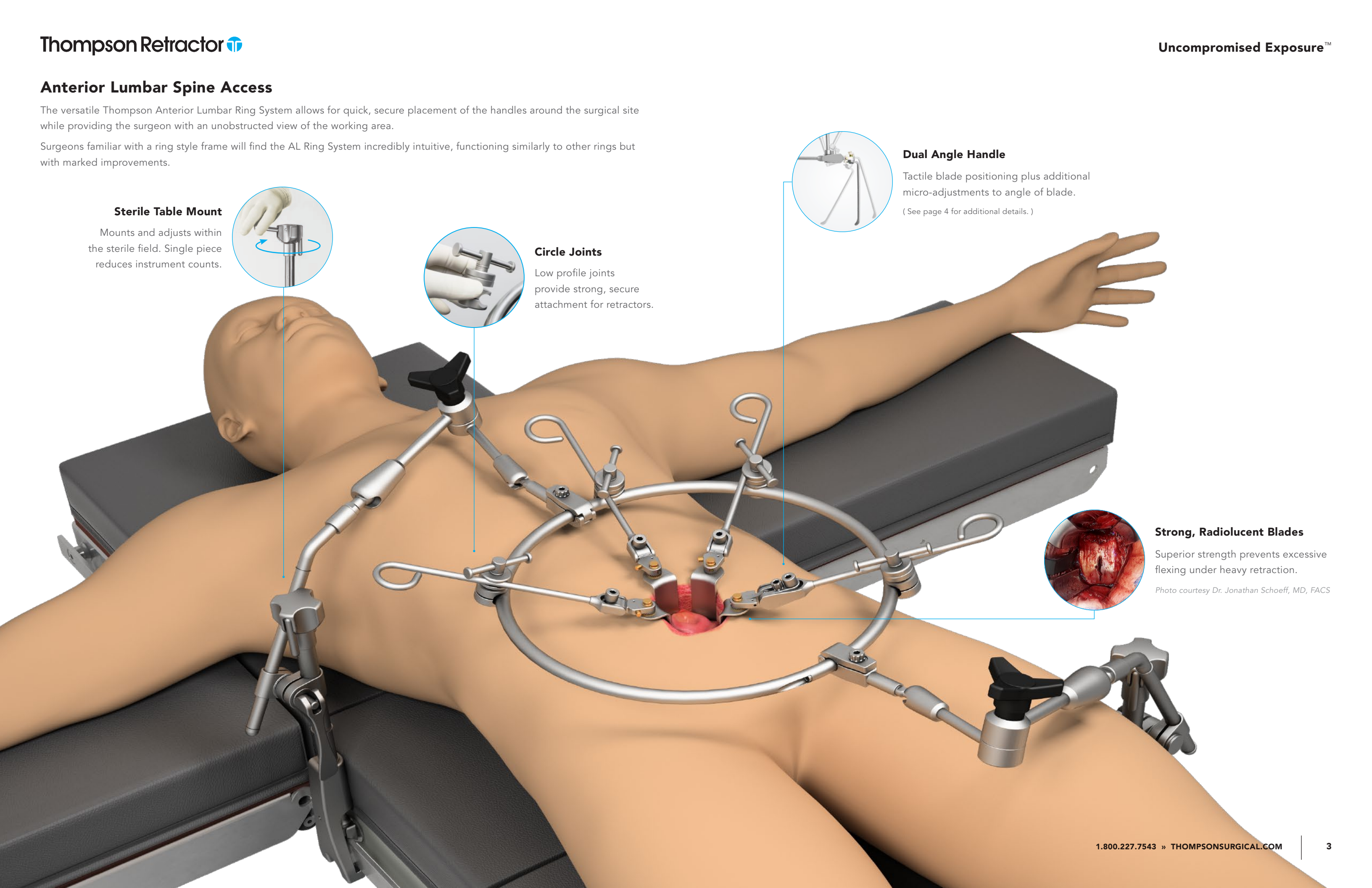
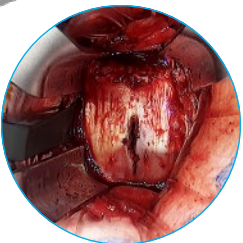
Dual Angle Handle

Tactile blade positioning plus additional micro-adjustments to angle of blade.
(See page 4 for additional details.)

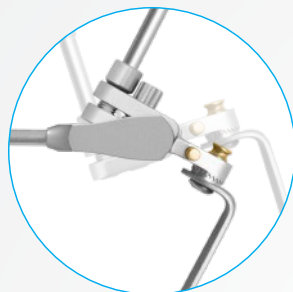


Strong, Radiolucent Blades

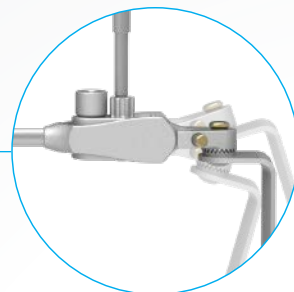
Superior strength prevents excessive flexing under heavy retraction.
Photo courtesy Dr. Jonathan Schoeff, MD, FACS



Anterior Lumbar Ring System Handles



1. Tactile blade positioning



2. Quick Angle micro-adjustments



Dual Angle Handle 8"

Provides tactile blade placement, as well as additional micro-adjustments, with the use of included Hex Tool.

#SL42101

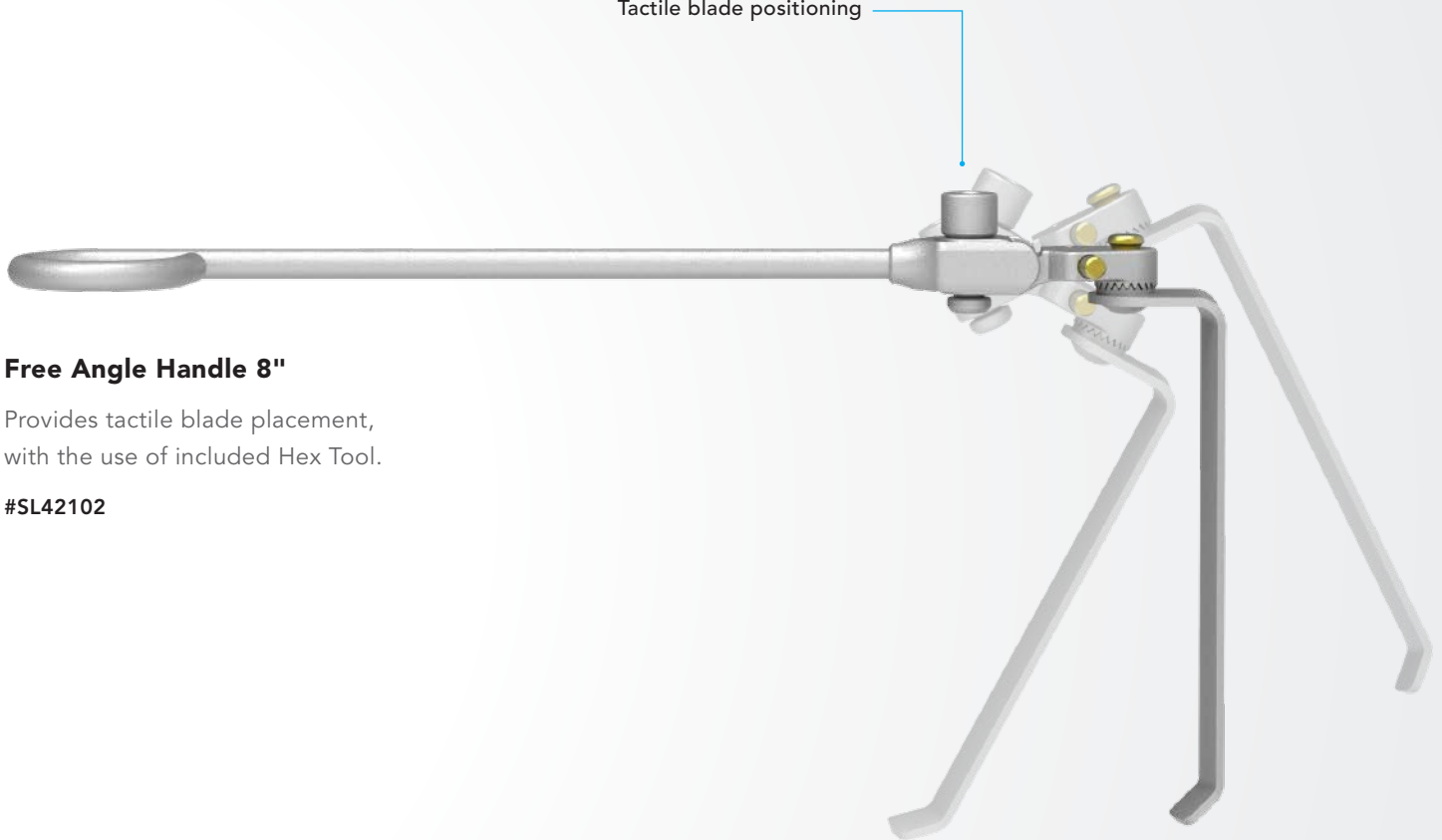


S-Lock® Technology

Provides the ability for blades to swivel 360° or lock securely in place, in any orientation.

Anterior Lumbar Ring System Handles [CONTINUED]

Tactile blade positioning



Free Angle Handle 8"

Provides tactile blade placement,
with the use of included Hex Tool.

#SL42102



Hex Tool

One tool for blade placement
and ring frame assembly.

#60021



Circle Joint

#42100

Anterior Lumbar Ring System Blades

Thompson offers strong, radiolucent blades that prevent excessive flexing under heavy retraction.



Radiolucent Short Neck Renal Vein

Rigid vessel retraction.

25mm wide
80mm - 200mm depths
10mm increments

30mm x 60mm Radiolucent Renal Vein Blade available, call or visit us online for information.



Radiolucent Richardson

Abdominal wall retraction for procedures requiring a larger incision.

50mm wide
40mm - 200mm depths
10mm increments



Radiolucent Advanced MIS 18mm Renal Vein

Rigid, low profile MIS vessel retraction.

18mm wide
80mm - 200mm depths
10mm increments



Radiolucent Advanced MIS Reverse Tapered

Maintains MIS incision size, while providing additional retraction width at the distal end.

18mm wide (proximal end)
20mm wide (distal end)
100mm - 200mm depths
10mm increments



Radiolucent Advanced MIS Fine Vessel

Fine vessel retraction, specially designed for 'advanced MIS' users.

9mm wide (proximal end)
12mm wide (distal end)
80mm - 200mm depths
10mm increments

NOT intended for use as a stand alone blade.

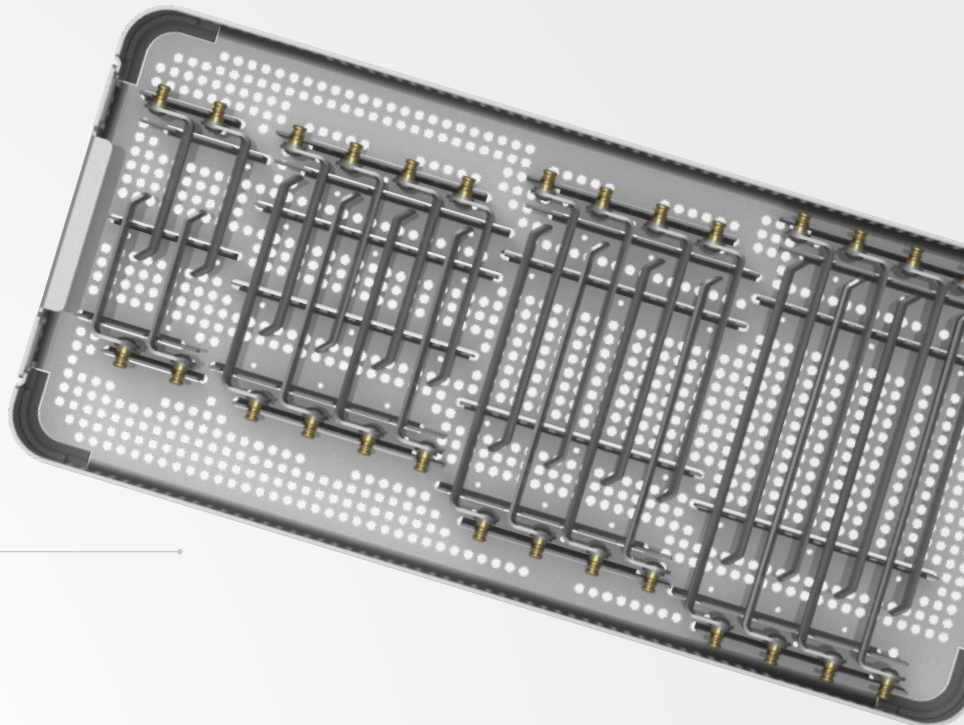
NOT indicated for vessel mobilization.

Uncompromised Exposure™

Accessories

Thompson Retractor offers a wide variety of accessory items to compliment your Anterior Lumbar retractor system of choice.

Organized Blade Trays



S-Lock® Hand Held Adapter



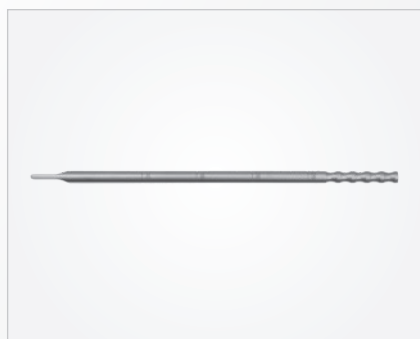
Lite Wand Xe



Suction for Anterior Lumbar Surgery (SALS)



Rail Extender



Depth Gauge



Jackson Frame Adapter

For a Free Trial Call Today*

1.800.227.7543

Rev A
071019
mg alrsg



Uncompromised Exposure™

VISIT US ONLINE: **THOMPSONSURGICAL.COM**

CONTACT

Address

Thompson Surgical Instruments, Inc.
10341 E Cherry Bend Rd.
Traverse City, MI 49684
USA

Phone + Fax

Toll Free 1-800-227-7543
Phone 231-922-0177
Fax 231-922-0174

Online

Email info@thompsonsurgical.com
Website www.thompsonsurgical.com

Social



Thompson
SURGICAL INSTRUMENTS

**Made In
USA**

* Free trial valid for U.S. customers only. Customers outside the U.S.A., please call +1-231-922-0177 for availability.

© 2019 Thompson Surgical Instruments, Inc. Traverse City, Michigan. Printed in U.S.A.

© S-Lock®, PLA®, and the "T Circle" logomark are Registered Trademarks of Thompson Surgical Instruments, Inc.

Patents: US4971038, US5025780, US5888197, US5897087, US5902233, US5984865, US6033363, US6416465, US6511423, US7338442, US7749163, US8257255, US8360971, US8617064. Other patents pending.

Note: As we continually strive to provide the best products possible, some of the images in this document may appear slightly different from the product received.