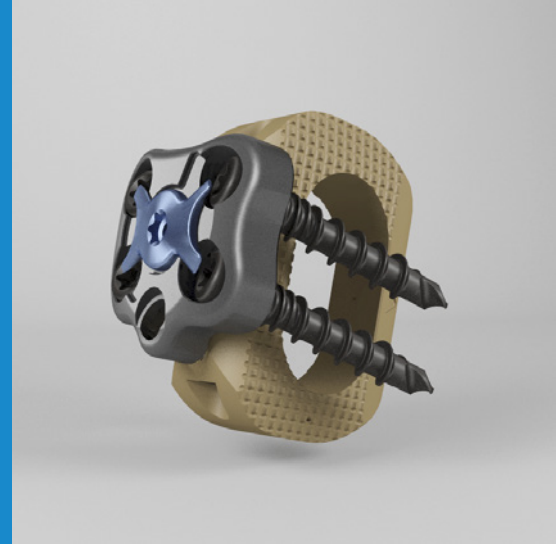


DATA SHEET

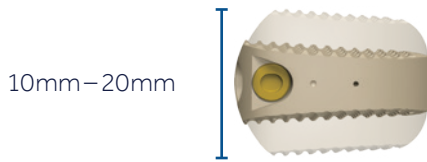
Divergence-L™ Anterior/Oblique Lumbar Fusion System



Interbody Spacers

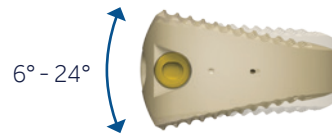
Multiple heights:*

10mm, 12mm, 14mm, 16mm, 18mm, and 20mm

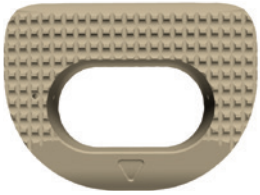


Multiple lordotic options:*

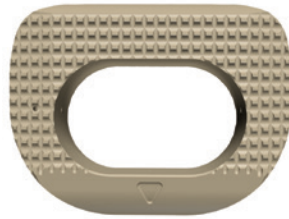
6°, 12°, 18°, and 24°



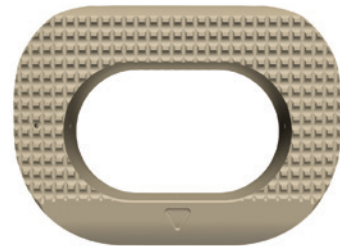
Multiple footprints:*



Small—32mm × 25mm



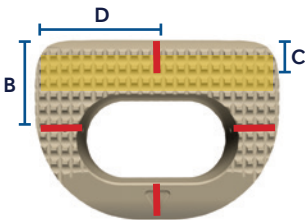
Medium—37mm × 29mm



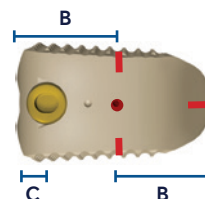
Large—42mm × 32mm

X-ray Markers

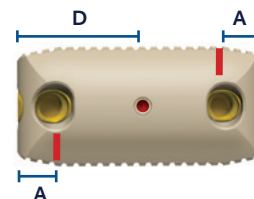
Axial View



Lateral View



AP View



Markers are flush with the endplate surfaces.
Measurements are taken from the center of the marker.

	A Distance from marker to lateral edge	B Distance from marker to anterior edge	C Distance from pivot rod to anterior edge	D Distance from lateral edge to center marker
Small	4mm	12.5mm	4.5mm	16mm
Medium	3.5mm	14.5mm	4.5mm	18.5mm
Large	3mm	16mm	4.5mm	21mm


*See back page for footprint, height, and lordosis combinations.

Medtronic



IMPLANT DIMENSIONS

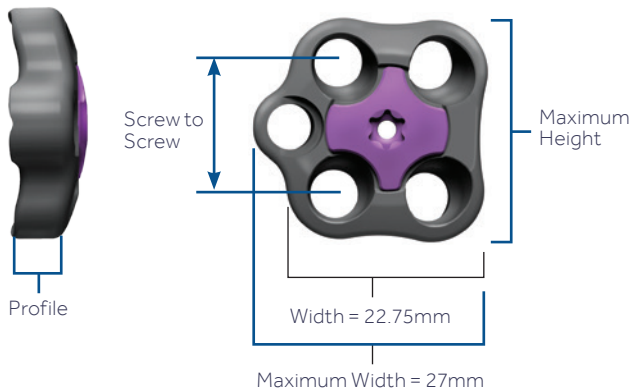
Interbody Comparison



	Divergence-L*	Perimeter®	Sovereign®
Height	10mm-20mm	8mm-20mm	10mm-20mm
Lordotic Angles	6°, 12°, 18°, 24°	4°, 8°, 12°	8°, 12°
Footprint Sizes			
Small	32mm × 25mm	19mm × 15mm	32mm × 23mm
Medium	37mm × 29mm	26mm × 21mm	37mm × 27mm
Large	42mm × 32mm	30mm × 24mm	42mm × 30mm
XL	–	36mm × 28mm	–

Plate

Divergence-L Anterior/Oblique Lumbar Fusion System



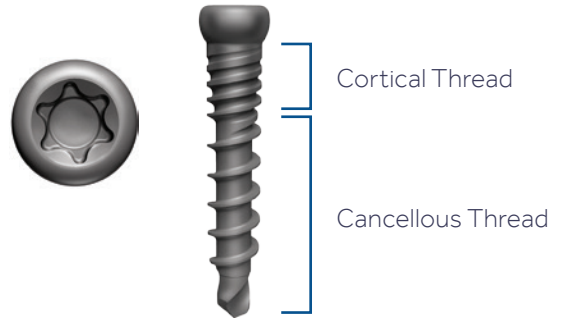
Multiple plate sizes: 10mm, 12mm, 14mm, 16mm, 18mm, and 20mm

Plate Color	Plate Description		Interbody Size		Maximum Height		Screw to Screw		Plate Profile	
	Divergence-L	Pyramid + 4	Divergence-L	Pyramid + 4	Divergence-L	Pyramid + 4	Divergence-L	Pyramid + 4	Divergence-L	Pyramid + 4
Gold	10mm	35mm	10mm	10mm	24mm	35mm	11.27mm	22.05mm	5.35mm	3.4mm
Purple	12mm	37mm	12mm	12mm	26mm	37mm	13.27mm	24.05mm	5.35mm	3.4mm
Green	14mm	39mm	14mm	14mm	28mm	39mm	15.27mm	26.05mm	5.35mm	3.4mm
Blue	16mm	41mm	16mm	16mm	30mm	41mm	17.27mm	28.05mm	5.35mm	3.4mm
Yellow	18mm	43mm	18mm	18mm	32mm	43mm	19.27mm	30.05mm	5.10mm	3.4mm
Dark Blue	20mm	45mm	20mm	20mm	34mm	45mm	21.27mm	32.05mm	4.90mm	3.4mm

*See back page for footprint, height, and lordosis combinations.

Screws

- Lengths: 20mm, 25mm, 30mm, 35mm and 40mm standard
- Inner Diameter: 3.7mm
Outer Diameter: 5.5mm
- Cancellous Thread Pitch: 3.2mm
Cortical Thread Pitch: 1.6mm
- Self-drilling and Self-tapping Screws
- Dual Thread Design



Screw Angulation

Implant	Lateral	Axial	AP
Divergence-L OLIF51 Plate*			
Divergence-L ALIF Plate**			

*OLIF51™ Oblique Lateral Interbody Fusion L5-S1
 **ALIF Anterior Lumbar Interbody Fusion

GRAFT VOLUME INFORMATION

P/N	Description	Length x Width	Divergence-L Graft Volume (cc)
2151110	Interbody, Small, 6 degrees, 10mm	32 x 25	1.86
2151112	Interbody, Small, 6 degrees, 12mm	32 x 25	2.28
2151114	Interbody, Small, 6 degrees, 14mm	32 x 25	2.71
2151116	Interbody, Small, 6 degrees, 16mm	32 x 25	3.13
2151118	Interbody, Small, 6 degrees, 18mm	32 x 25	3.55
2151120	Interbody, Small, 6 degrees, 20mm	32 x 25	3.98
2151210	Interbody, Medium, 6 degrees, 10mm	37 x 29	2.81
2151212	Interbody, Medium, 6 degrees, 12mm	37 x 29	3.46
2151214	Interbody, Medium, 6 degrees, 14mm	37 x 29	4.12
2151216	Interbody, Medium, 6 degrees, 16mm	37 x 29	4.77
2151218	Interbody, Medium, 6 degrees, 18mm	37 x 29	5.42
2151220	Interbody, Medium, 6 degrees, 20mm	37 x 29	6.07
2151310	Interbody, Large, 6 degrees, 10mm	42 x 32	3.74
2151312	Interbody, Large, 6 degrees, 12mm	42 x 32	4.62
2151314	Interbody, Large, 6 degrees, 14mm	42 x 32	5.51
2151316	Interbody, Large, 6 degrees, 16mm	42 x 32	6.39
2151318	Interbody, Large, 6 degrees, 18mm	42 x 32	7.27
2151320	Interbody, Large, 6 degrees, 20mm	42 x 32	8.15
2152110	Interbody, Small, 12 degrees, 10mm	32 x 25	1.56
2152112	Interbody, Small, 12 degrees, 12mm	32 x 25	1.98
2152114	Interbody, Small, 12 degrees, 14mm	32 x 25	2.41
2152116	Interbody, Small, 12 degrees, 16mm	32 x 25	2.84
2152118	Interbody, Small, 12 degrees, 18mm	32 x 25	3.37
2152120	Interbody, Small, 12 degrees, 20mm	32 x 25	3.79
2152210	Interbody, Medium, 12 degrees, 10mm	37 x 29	2.53
2152212	Interbody, Medium, 12 degrees, 12mm	37 x 29	3.18
2152214	Interbody, Medium, 12 degrees, 14mm	37 x 29	3.84
2152216	Interbody, Medium, 12 degrees, 16mm	37 x 29	4.49

P/N	Description	Length x Width	Divergence-L Graft Volume (cc)
2152218	Interbody, Medium, 12 degrees, 18mm	37 x 29	5.31
2152220	Interbody, Medium, 12 degrees, 20mm	37 x 29	5.96
2152312	Interbody, Large, 12 degrees, 12mm	42 x 32	3.84
2152314	Interbody, Large, 12 degrees, 14mm	42 x 32	4.73
2152316	Interbody, Large, 12 degrees, 16mm	42 x 32	5.61
2152318	Interbody, Large, 12 degrees, 18mm	42 x 32	6.71
2152320	Interbody, Large, 12 degrees, 20mm	42 x 32	7.60
2153112	Interbody, Small, 18 degrees, 12mm	32 x 25	1.68
2153114	Interbody, Small, 18 degrees, 14mm	32 x 25	2.21
2153116	Interbody, Small, 18 degrees, 16mm	32 x 25	2.63
2153118	Interbody, Small, 18 degrees, 18mm	32 x 25	3.15
2153120	Interbody, Small, 18 degrees, 20mm	32 x 25	3.58
2153214	Interbody, Medium, 18 degrees, 14mm	37 x 29	3.19
2153216	Interbody, Medium, 18 degrees, 16mm	37 x 29	3.86
2153218	Interbody, Medium, 18 degrees, 18mm	37 x 29	4.67
2153220	Interbody, Medium, 18 degrees, 20mm	37 x 29	5.32
2153316	Interbody, Large, 18 degrees, 16mm	42 x 32	5.04
2153318	Interbody, Large, 18 degrees, 18mm	42 x 32	6.15
2153320	Interbody, Large, 18 degrees, 20mm	42 x 32	7.03
2154116	Interbody, Small, 24 degrees, 16mm	32 x 25	2.30
2154118	Interbody, Small, 24 degrees, 18mm	32 x 25	2.95
2154120	Interbody, Small, 24 degrees, 20mm	32 x 25	3.37
2154216	Interbody, Medium, 24 degrees, 16mm	37 x 29	3.31
2154218	Interbody, Medium, 24 degrees, 18mm	37 x 29	4.29
2154220	Interbody, Medium, 24 degrees, 20mm	37 x 29	4.94
2154318	Interbody, Large, 24 degrees, 18mm	42 x 32	5.56
2154320	Interbody, Large, 24 degrees, 20mm	42 x 32	6.44

Medtronic

Medtronic
Spinal and Biologics Business
Worldwide Headquarters

2600 Sofamor Danek Drive
Memphis, TN 38132



Medtronic Sofamor Danek USA, Inc.
1800 Pyramid Place
Memphis, TN 38132

(901) 396-3133
(800) 876-3133
Customer Service: (800) 933-2635

Medtronic Canada
Canadian Headquarters

99 Hereford Street
Brampton, ON L6Y 0R3

(905) 460-3800
(800) 268-5346

Please see the package insert for the complete list of indications, warnings, precautions, and other important medical information.