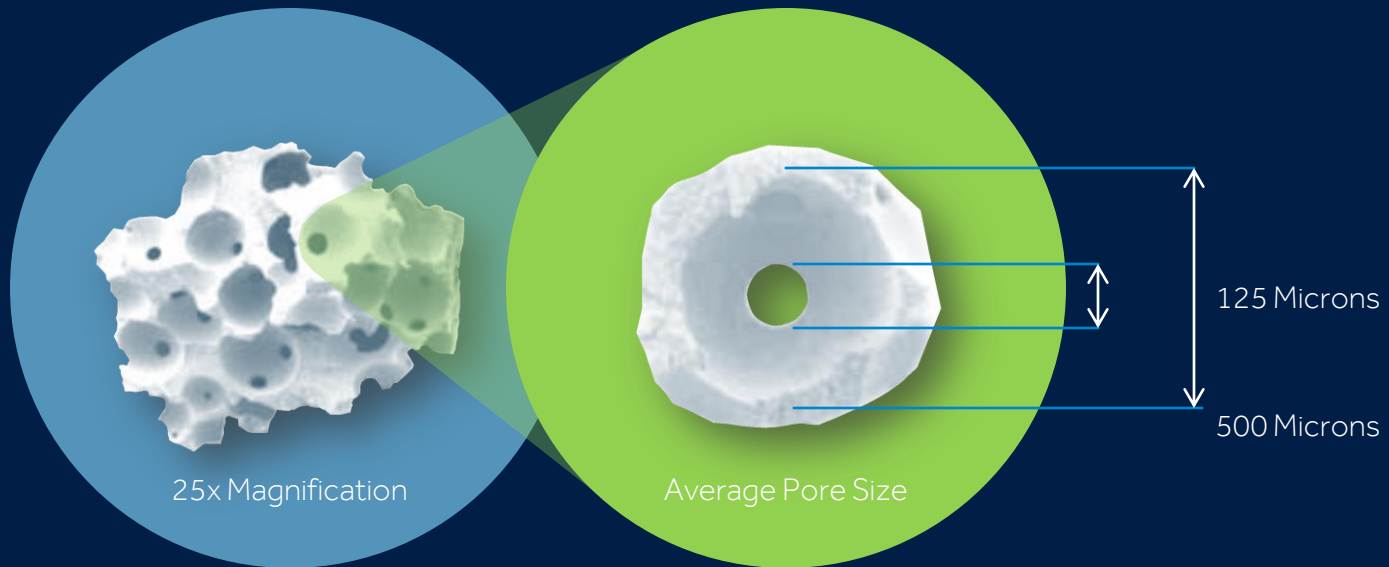


MASTERGRAFT[®]

FAMILY OF PRODUCTS

CHEMICAL COMPOSITION & PHYSICAL PROPERTIES

- 85% beta-tricalcium phosphate (β -TCP)
- 15% hydroxyapatite (HA)



- 80% porosity
- 500 micron average pore size
- 125 micron average interconnected diameter

THE RESORBABLE **ADVANTAGE**

AIDS OSTEO- INTEGRATION

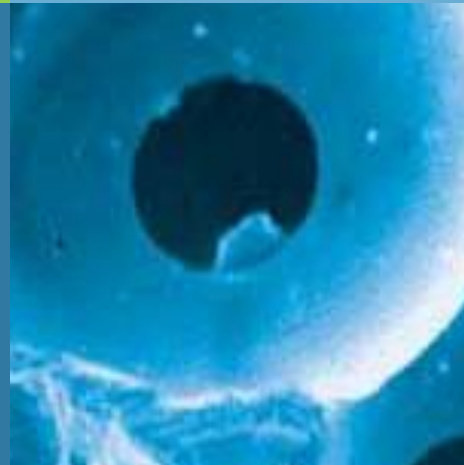
- Acts as a scaffold
- Allows creeping substitution

SUPPORTS BONE GROWTH

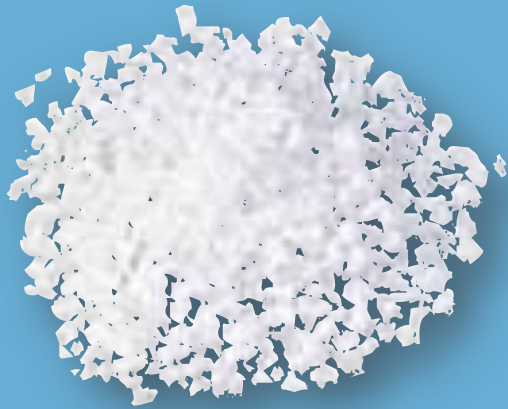
- Bonds with bone surrounding defect
- Direct contact with woven bone and osteoid

FACILITATES REGENERATION

- Allows for bony ingrowth
- Biphasic composition avoids complete resorption



MASTERGRAFT GRANULES

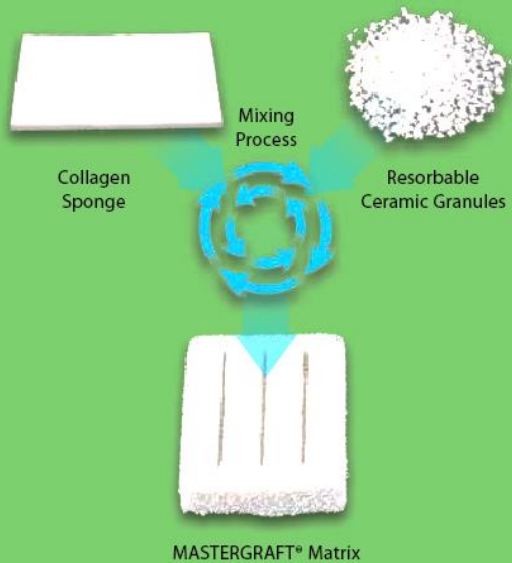


Porous scaffold composed of minerals similar to those found in bone

Contains calcium and phosphate – The principle constituents of human bone

Hydroxyapatite allows for a more controlled resorption

MASTERGRAFT MATRIX



Comprised of MASTERGRAFT granules within a Type-I collagen carrier

Compression resistant (626 newtons) – Protects cellular elements from loading forces

Can be hydrated with BMA or blood as desired cell carrier

MASTERGRAFT PUTTY

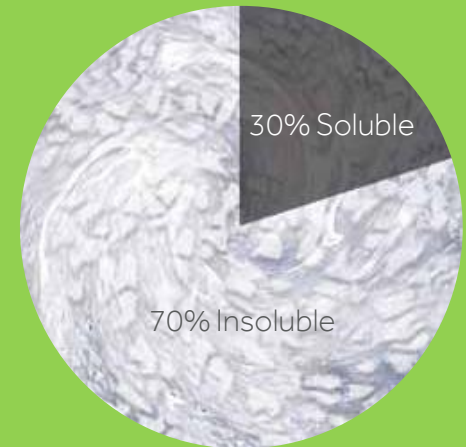


Malleable – Can be shaped to surgical environment

Type-I Collagen Slurry

- 30% soluble
- 70% insoluble

Easy hydration with BMA, or blood as a cell carrier



THANK YOU