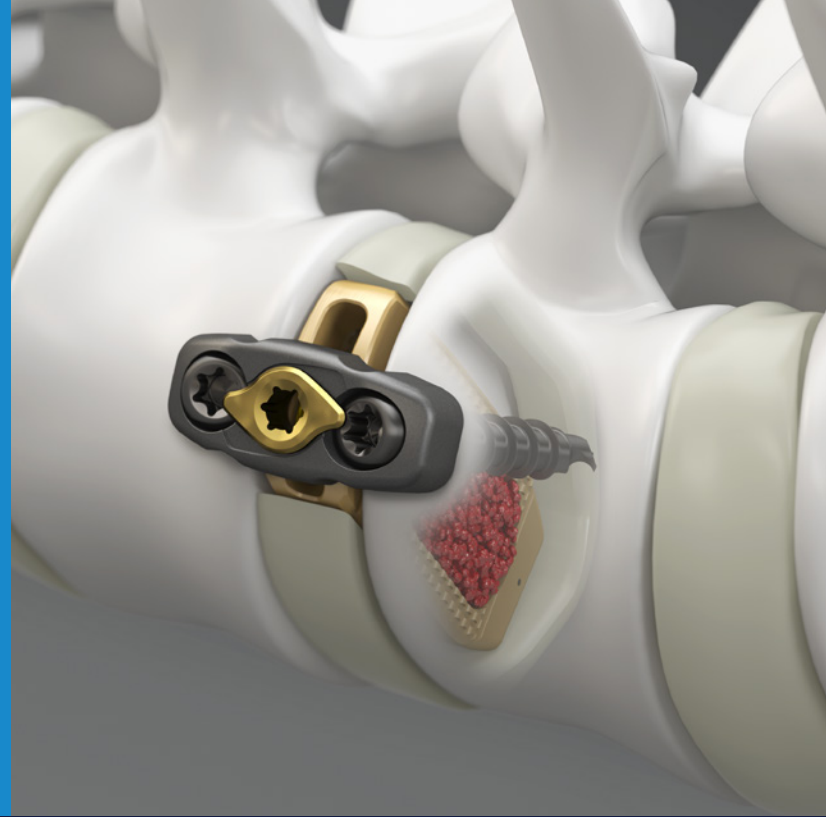


PRODUCT
INFORMATION



Pivox™
Oblique Lateral
Spinal System

INNOVATIVE
INTERBODY CAGE AND PLATE
ENGINEERED FOR
THE OLIF25™ PROCEDURE.

Medtronic

Pivox

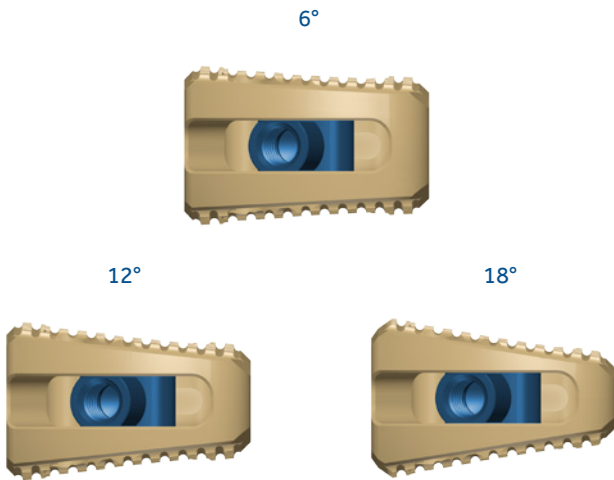
Oblique Lateral Spinal System

STANDALONE

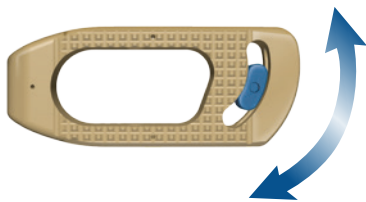
The Pivox Oblique Lateral Spinal System (interbody cage, plate and bone screws) can be used together at one or two contiguous levels from L2 to S1 without the need for additional posterior fixation.



INTERBODY CAGE



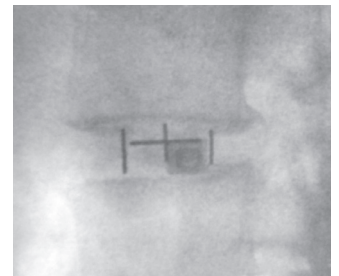
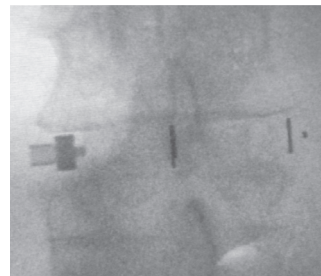
Lordosis. The range of lordotic angles (0°-18°) provides surgeons options to help increase segmental lordosis.



0°-40° Angulation. Swivel feature on the interbody cage enables placement with the inserter remaining in the oblique corridor or using the orthogonal maneuver.

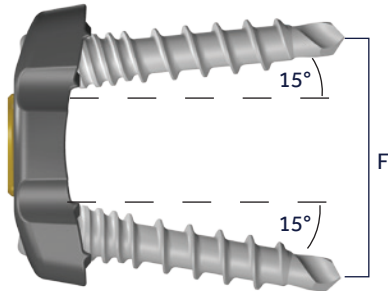


Graft Volume. The hollow geometry of the implants allows them to be packed with up to 7.36 cubic centimeters of autogenous bone graft, and/or allogenic bone graft composed of cancellous and/or coticocancellous one graft, such as Grafton® DBM.



Imaging. Image friendly material (PEEK) and x-ray markers enable surgeons to assess intra-op and post-op implant placement.

PLATES AND SCREWS



Supplemental Fixation. The Pivox plate and bone screw components are indicated as a supplemental fixation device for the lumbosacral levels, anterior L5-S1 and oblique or lateral L1-L5.

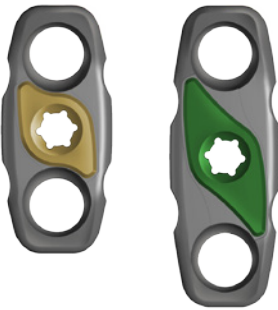
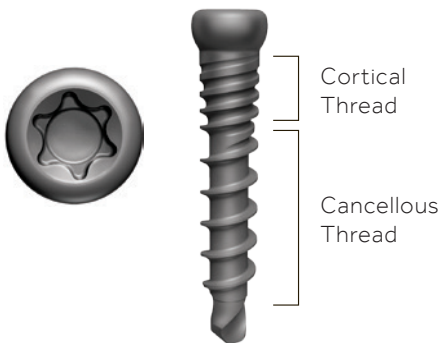


Plate.

- Two plate sizes: small and large.
- Built in twist lock that partially covers screw holes prevents screw back out. *The color and positive stop of the twist lock allows you to confirm the lock is applied.*

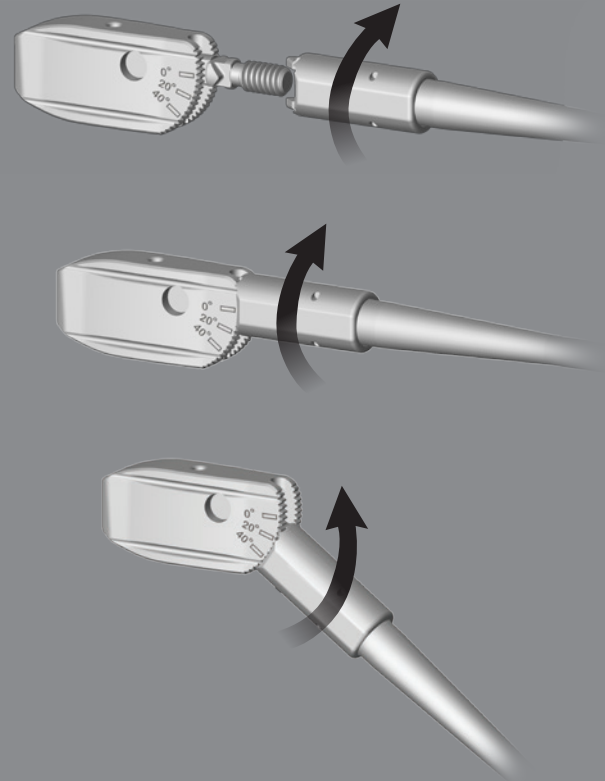


Screws.

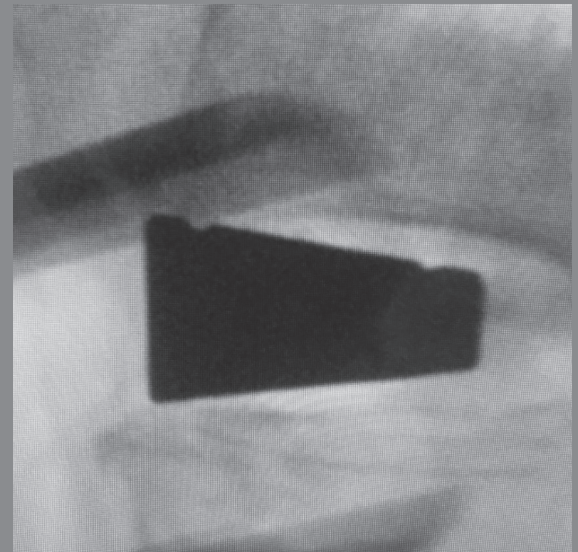
- Multiple bone screw lengths.
- Self-drilling and self-tapping screws.
- Dual-thread design.

TRIALING

- Heights, lengths and lordotic angle options of the interbody trials are sufficient to allow for selection of an appropriate interbody implant size.
- The trial inserter can connect to the interbody trials at variable angles with the ability to lock the angle of attachment between the interbody trial and trial inserter.



- Each trial has two grooves parallel to the coronal plane to visualize when the trial is positioned correctly in the disc space. This can be verified in a true lateral view with the trial in the orthogonal position, both grooves will be visible.



INSTRUMENTS

Interbody Insertion.

- The interbody cage and plate can be inserted together with the All-In-One Inserter or separately using the Interbody Inserter and Plate Inserter.
- Instrumentation and swivel feature on the interbody cage allows the interbody to be placed symmetrically across the disc space without the orthogonal maneuver.
- Inserter options hold, retain and maintain proper orientation of the interbody during implantation.

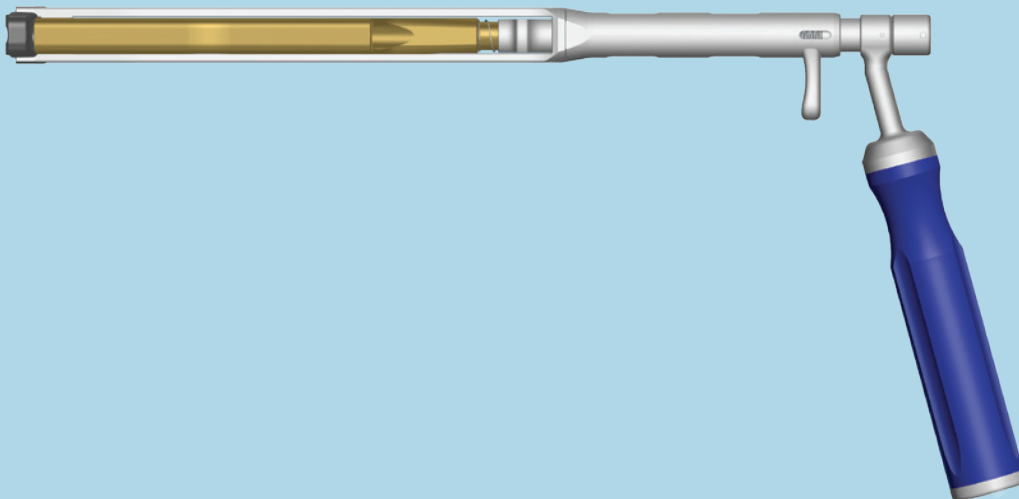
1. All-In-One Inserter with Screw Guide



2. Interbody Inserter



3. Plate Inserter with Screw Guide



SUMMARY OF INDICATIONS FOR PIVOX OBLIQUE LATERAL SPINAL SYSTEM

Cage

- Use with autograft and/or allogenic bone graft comprised of cancellous and/or corticocancellous bone graft to facilitate interbody fusion;
- in patients with Degenerative Disc Disease (DDD) at one or two contiguous levels from L2 to S1, with or without up to Grade 1 Spondylolisthesis or retrolisthesis at the involved levels; used with supplemental fixation cleared for use in the lumbar spine;
- and to provide anterior column support in patients with degenerative scoliosis at one or two contiguous levels as an adjunct to pedicle screw fixation.

Plate and Screws

- Supplemental fixation: Oblique or lateral L1-L5 above the vascular structures bifurcation; anterior L5-S1 below the bifurcation;
- Temporary stabilization in patients with DDD; trauma; tumors; deformity; pseudarthrosis; and/or failed previous fusions.

Cage with Plates and Screws

In patients with DDD at one or two contiguous levels from L2 to S1, with or without up to Grade 1 Spondylolisthesis or retrolisthesis at the involved levels.

NOTES

Medtronic

Medtronic

Spinal and Biologics Business
Worldwide Headquarters

2600 Sofamor Danek Drive
Memphis, TN 38132



Medtronic Sofamor Danek USA, Inc.

1800 Pyramid Place
Memphis, TN 38132

(901) 396-3133
(800) 876-3133
Customer Service: (800) 933-2635

Medtronic Canada

Canadian Headquarters
99 Hereford Street
Brampton, ON L6Y 0R3

(905) 460-3800
(800) 268-5346

Please see the package insert for the complete list of indications, warnings, precautions, and other important medical information.